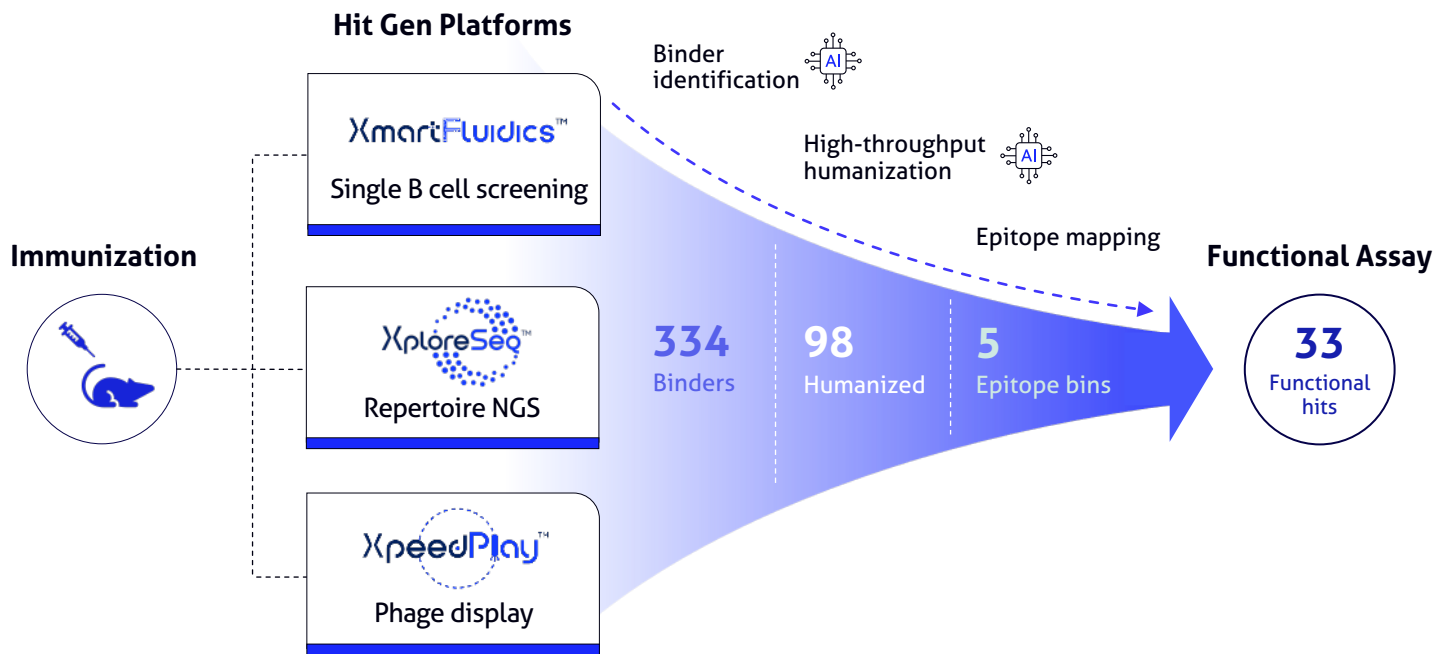


## 3-in-1 Integrated Antibody Discovery

Identify diverse, functional, developable & humanized hits

### X Discover functional antibodies against a novel immune checkpoint

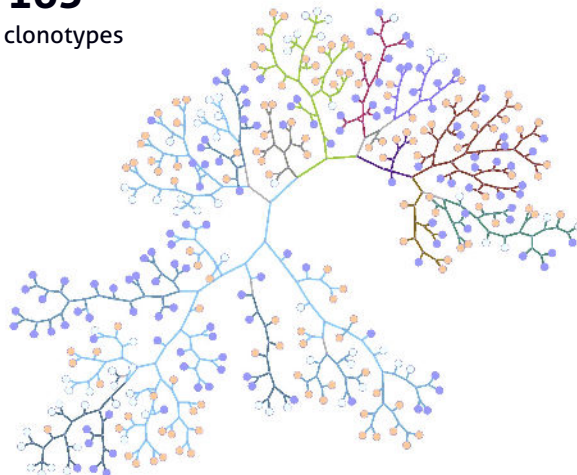


### X AI-powered repertoire mining for greater sequence & epitope diversity

**65**  
IGHV genes

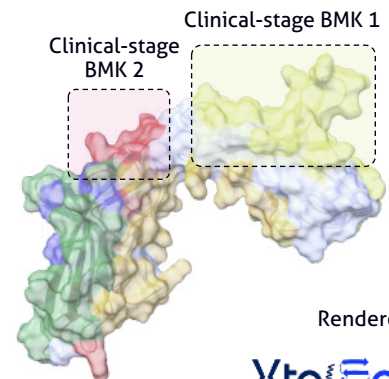
**165**  
VH clonotypes

- XploreSeq
- XmartFluidics
- XpeedPlay
- IGHV subgroup



**2** Validated epitopes

**3** Novel epitopes



Rendered by

XtalFold™



# AI catches rare functional hits that escape traditional screening

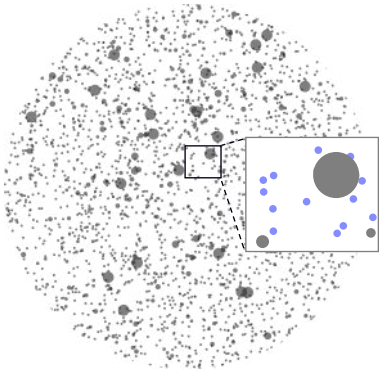
Immune repertoire NGS



Rare binder prediction by active learning

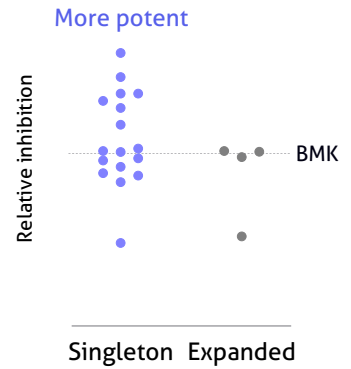
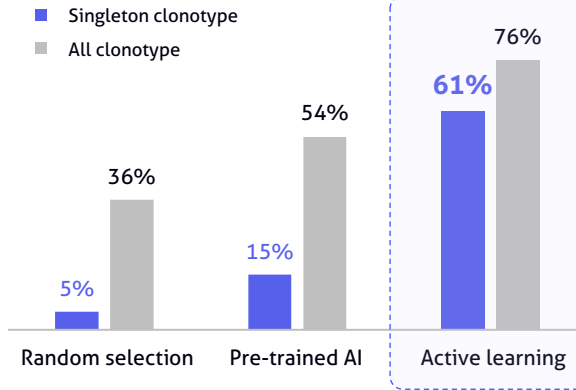


Functional validation



**1160**  
Singleton clonotypes

**117**  
Expanded clonotypes



# High-throughput humanization and developability prediction



## Integrated Hit Generation

- Trilux™ 3-in-1 antibody discovery
- Epitope-specific antibody discovery
- Immune library mining powered by NGS + AI
- Hard targets

## Next-Gen Engineering

- Affinity modulation
- Developability optimization
- pH sensitivity engineering
- Deep humanization
- Species cross-reactivity